

KA'ABA ANAMISM CALIPHS DESERT  
MIGRATIONS NOMADIC CARAVAN HAJJ  
BANTU METALLURGY  
SAVANNA SAHEL  
JIHAD BAZAAR  
SWAHILI HIJRAH  
GRIOT REVELATION MUHAMMAD  
SUDAN BEDOUINS MOSQUE

The image features a central white oval containing the text "ANCIENT AFRICA & THE SPREAD OF ISLAM". Surrounding this central oval are various terms related to African history and the spread of Islam, arranged in a roughly circular pattern. The terms include: KA'ABA, ANAMISM, CALIPHS, DESERT, HAJJ, NOMADIC, CARAVAN, METALLURGY, SAHEL, BAZAAR, HIJRAH, MUHAMMAD, MOSQUE, BEDOUINS, REVELATION, SWAHILI, GRIOT, SUDAN, JIHAD, SAVANNA, BANTU, and MIGRATIONS.

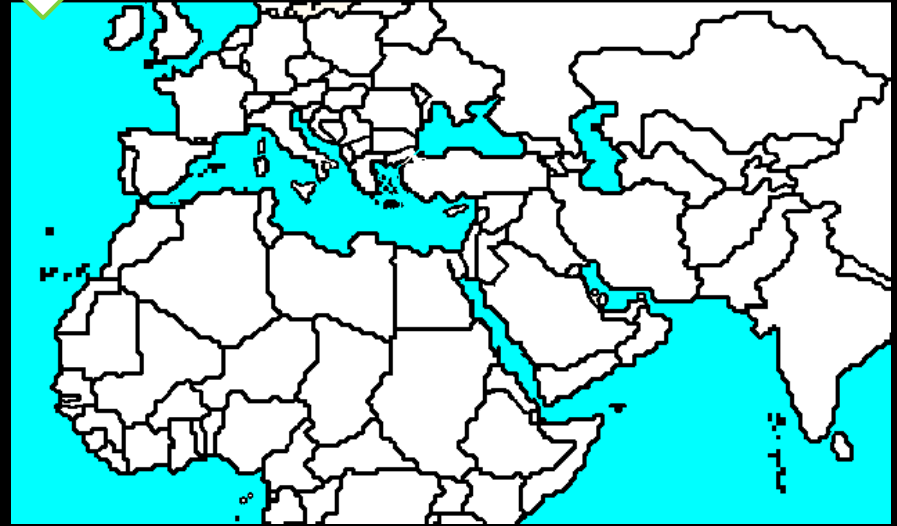
# THE SPREAD OF ISLAM

In Ancient Times the Middle East was the Bridge between what three Continents?

1. AFRICA
2. EUROPE
3. ASIA

Organized groups of Nomads roamed the vast Deserts

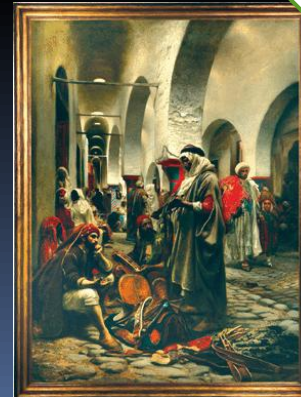
BEDOUINS



Many Nomads took their herds & trade goods to markets

Many Nomads traveled in large groups of Traders for protection

CARAVANS



ARAB  
BAZAAR

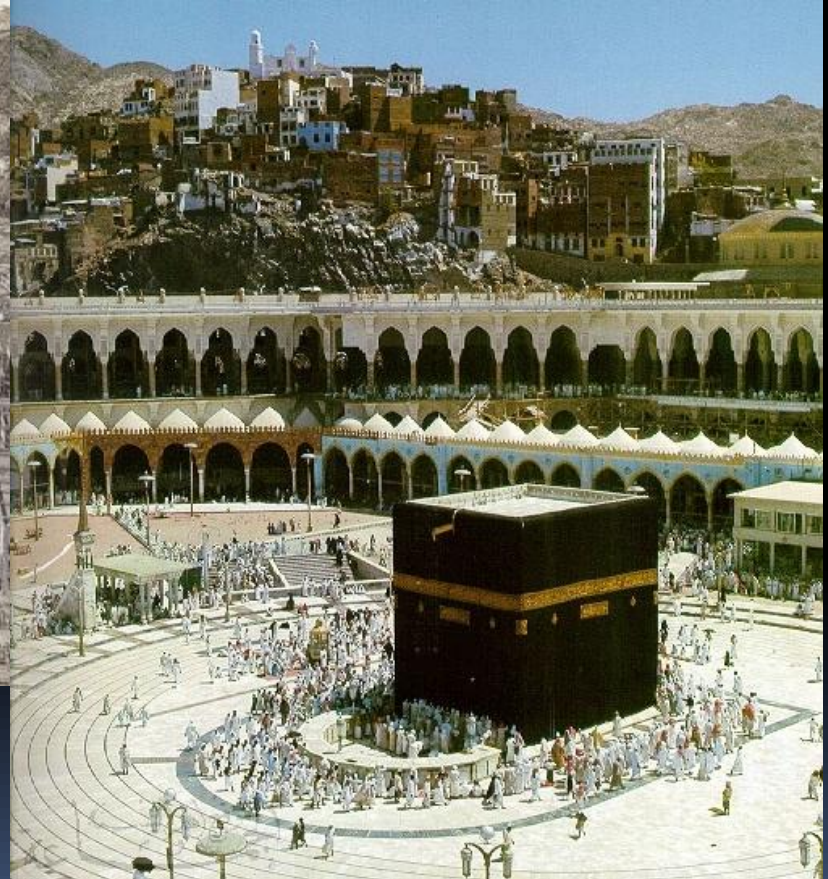
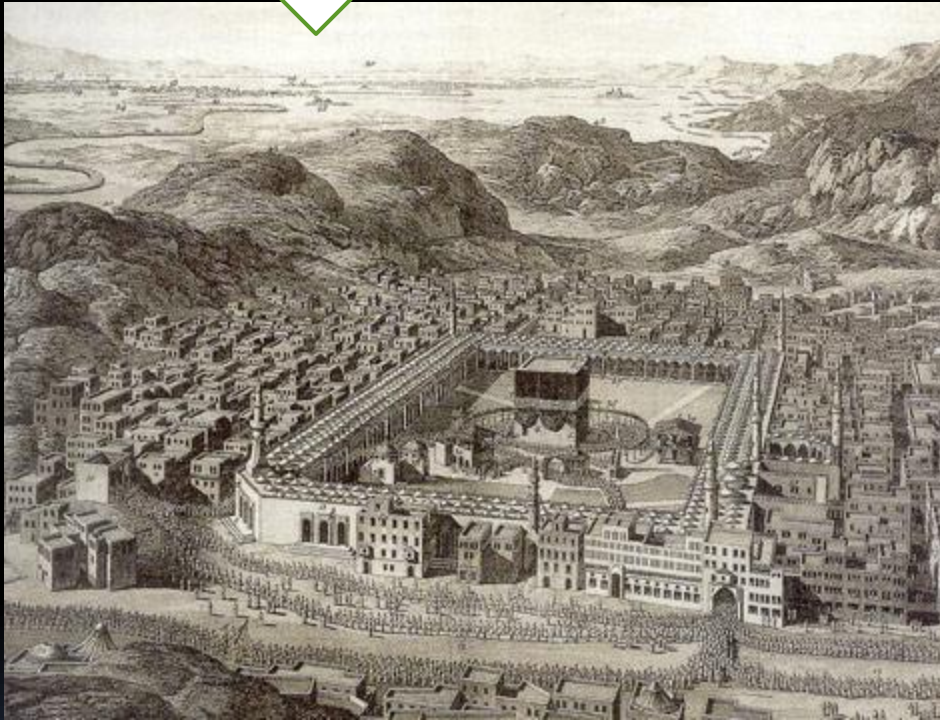


# THE SPREAD OF ISLAM

During Holy Months Traders went to a key Arabian City

MECCA

Religious Pilgrims worshipped at the Holy Shrine of Abraham



Eventually a Local Trader became the New Islamic Prophet

MUHAMMAD

KA'ABA

# THE SPREAD OF ISLAM

610 CE

MUHAMMAD FIRST REALIZED HE WAS ONE OF GOD'S MESSENGERS



## REVELATIONS

(Received messages from the Angel Gabriel)



## HIJRAH

MUHAMMAD'S PILGRIMAGE TO MEDINA ATTRACTED MANY FOLLOWERS

622 CE

10,000 BELIEVERS FOLLOW MUHAMMAD BACK TO THE KA'ABA

630 CE

## RETURN TO MECCA

632 CE

MUHAMMAD'S ASCENSION INTO HEAVEN

# THE SPREAD OF ISLAM

632 – 750  
CE

UPON MUHAMMAD'S DEATH, THE  
MUSLIMS SELECTED HIS SUCCESSORS

## CALIPHS

1. **ABU-BAKR**

(Used Jihad to Expand Islam)

2. **UMAR**

(Conqueror of Persia  
and was assassinated)

3. **UTHMAN**

(Consolidation of the Quran  
and was assassinated)

4. **ALI**

(Assassinated)

TITLE GIVEN BECAUSE THEY USED TO QURAN & MUHAMMAD'S TEACHINGS TO RULE

## "RIGHTLY GUIDED CALIPHS"

RULED  
OVER

## CALIPHATE

(DAR AL-ISLAM)

WHAT WERE THE KEY REASONS FOR THEIR SUCCESS IN SPREADING ISLAM?

THEIR STRUGGLE  
AGAINST EVIL

KEY TRAITS OF  
THEIR ARMIES

THEIR ENEMIES  
KEY PROBLEM

HOW MUSLIMS  
TREATED OTHERS

## JIHAD

("HOLY WAR")

## DISCIPLINED

(EFFECTIVE COMMANDERS)

## WEAK

(AND CRUEL)

## TOLERANCE

(BASED ON THE QURAN)

# THE SPREAD OF ISLAM

INTERNAL CONFLICT CAUSED CRISIS

EFFECTS OF RELIGIOUS DIFFERENCES

CIVIL UNREST & WAR

SUNNI-SHI'A SPLIT  
(RELIGIOUS SCHISM)

TWO KEY DYNASTIES ARISE AND TRY TO CONTROL THE ISLAMIC WORLD

UMAYYADS

661 – 750 CE (AD)

750 – 1258 CE (AD)

ABBASIDS



SHI'A

PARTY OR  
FOLLOWERS  
OF ALI

FOLLOWERS  
OF  
MUHAMMAD

SUNNI

# THE SPREAD OF ISLAM

KEY SYSTEMS CAUSES THE TEACHINGS OF ISLAM TO SPREAD BY LAND & SEA

## MUSLIM TRADE NETWORKS

CULTURAL BLENDING PROMOTED THE ARTS & SCIENCES IN KEY CITIES

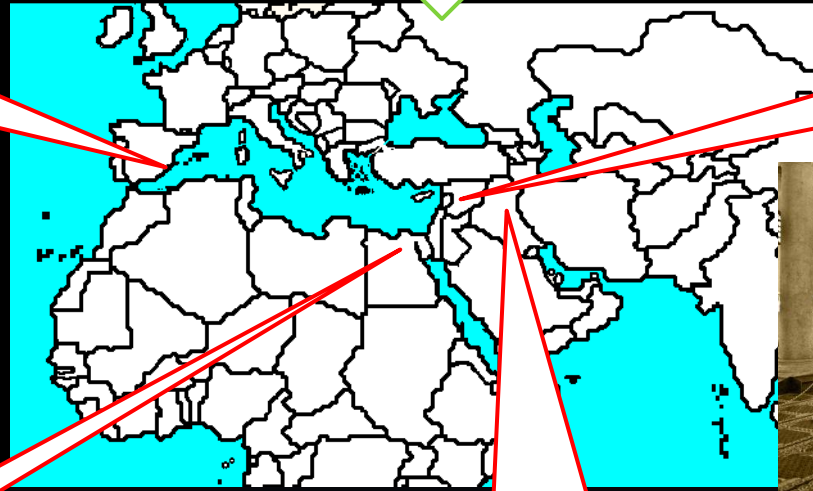
IN SPAIN:

**CORDOBA**



IN SYRIA:

**DAMASCUS**



IN EGYPT:

**CAIRO**



IN IRAQ:

**BAGHDAD**



# THE SPREAD OF ISLAM

LARGE MUSLIM CITIES DEVELOPED FOUR KEY SOCIAL CLASSES

UPPER CLASS

SECOND CLASS

THIRD CLASS

LOWEST CLASS

MUSLIM  
BY BIRTH

CONVERTS  
TO ISLAM

PEOPLE  
OF THE BOOK

FOREIGN  
SLAVES

SPECIAL CENTER FOR LEARNING

HOUSE of WISDOM





# THE SPREAD OF ISLAM

MUSLIM SCHOLARS HELPED DEVLOP AND EXTEND CLASSICAL KNOWLEDGE

Study of the Skies

Beautiful Writing

Basis of all Knowledge

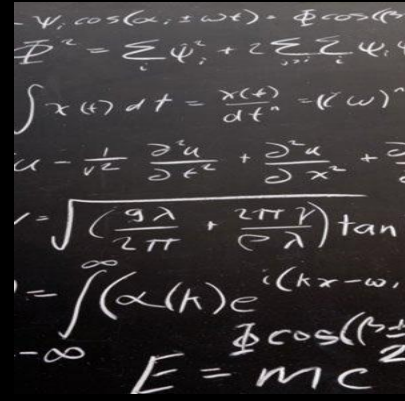
Search for Truth

ASTRONOMY

CALLIGRAPHY

MATHEMATICS

PHILOSOPY



MUSLIM SCHOLARS BECAME WELL KNOWN BEYOND THE MIDDLE EAST

Muslim Philosopher

Muslim Geographer

Muslim Scientist & Doctor

IBN RUSHD

IBN BATTUTA

IBN SINA